

CANNERY ROW-REPLAT OF LOTS 11-13

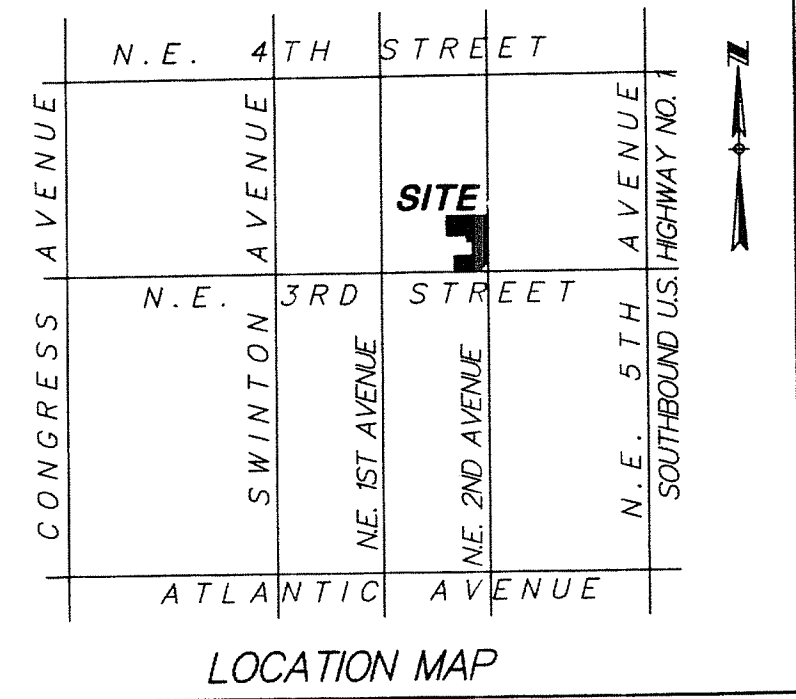
BEING A REPLAT OF LOTS 11, 12 AND 13, CANNERY ROW (PLAT BOOK 109, PAGES 133-134, P.R.P.B.CO.), LYING IN SECTION 16, TOWNSHIP 46 SOUTH, RANGE 43 EAST, CITY OF DELRAY BEACH, PALM BEACH COUNTY, FLORIDA.

MARCH, 2015

SHEET 2 OF 2

THIS INSTRUMENT WAS PREPARED BY PAUL D. ENGLE,
IN THE OFFICE OF O'BRIEN, SUITER & O'BRIEN, INC.,
955 N.W. 17TH AVENUE, SUITE K-1,
DELRAY BEACH, FLORIDA 33445.
(561) 276-4501

CURVE #	CENTRAL ANGLE	LENGTH	RADIUS	CHORD BEARING
C-1	90°00'00"	3.66'	2.33'	N45°00'00"W

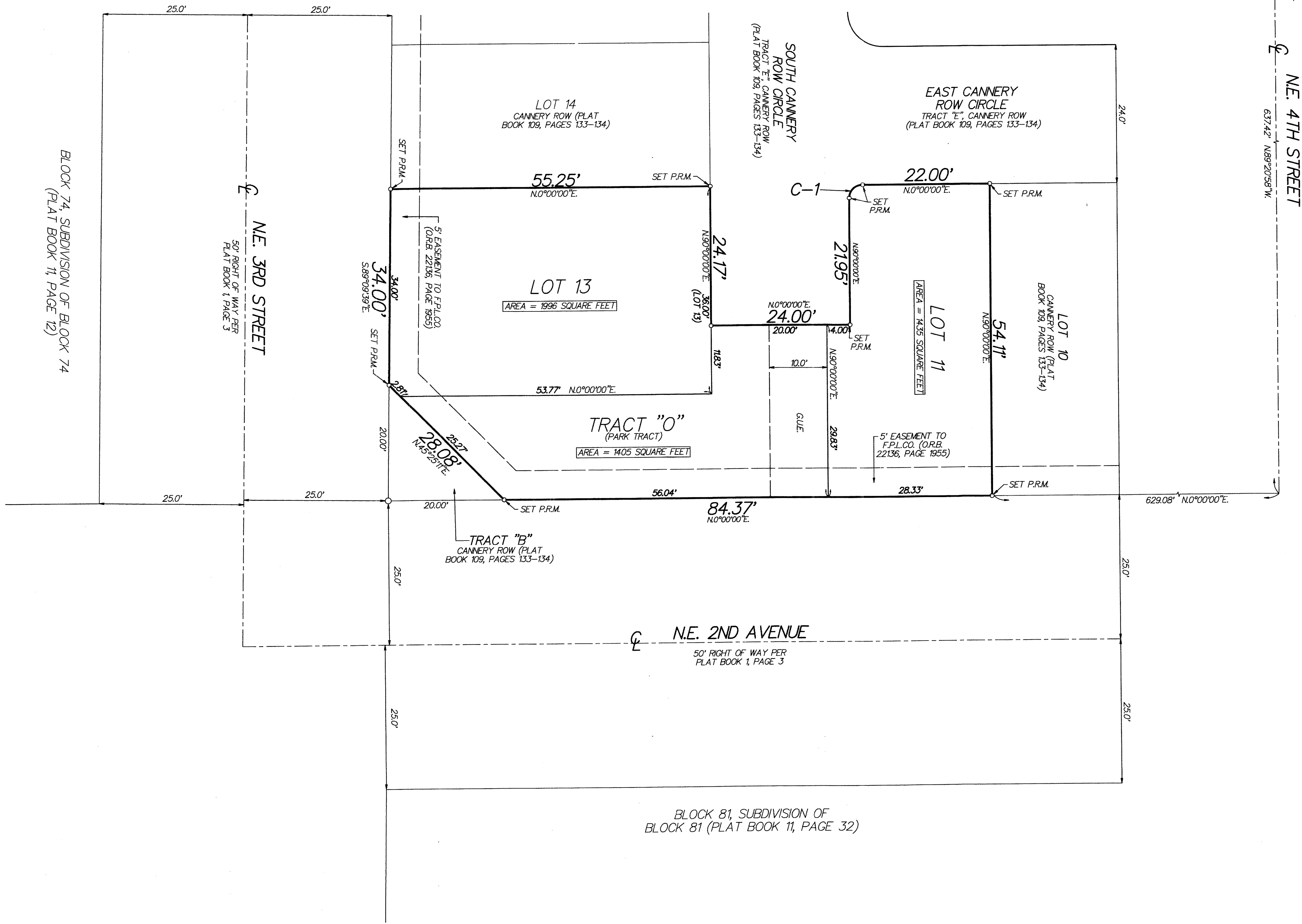
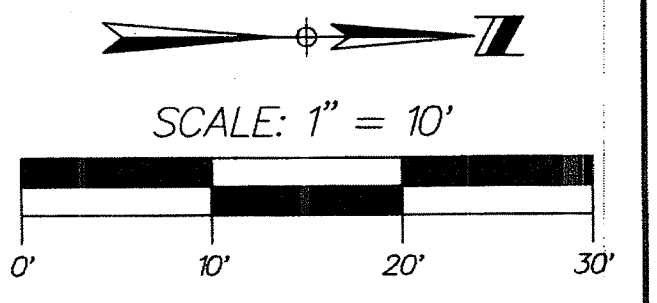


18

COUNTY OF PALM BEACH
STATE OF FLORIDA

THIS PLAT WAS FILED FOR RECORD AT _____
THIS _____ DAY OF _____
20____ AND DULY RECORDED IN PLAT BOOK NO. _____
ON PAGE _____

SHARON R. BOCK, CLERK OF CIRCUIT COURT



- LEGEND:**
- ☉ = CENTERLINE
 - G.U.E. = GENERAL UTILITY EASEMENT
 - P.R.M. = 4" X 4" CONCRETE MONUMENT STAMPED "PRM LB353"
 - O.R.B. = OFFICIAL RECORD BOOK
 - P.R.P.B.CO. = PUBLIC RECORDS OF PALM BEACH COUNTY
 - F.P.L.CO. = FLORIDA POWER & LIGHT COMPANY

BLOCK 74, SUBDIVISION OF BLOCK 74
(PLAT BOOK 11, PAGE 12)

BLOCK 81, SUBDIVISION OF
BLOCK 81 (PLAT BOOK 11, PAGE 32)